

The Family Welcome Center

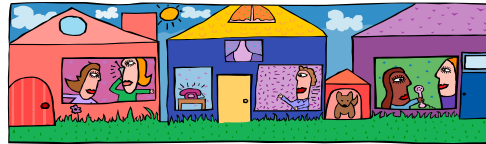
At CV-TEC

1585 Military Turnpike Extension

Plattsburgh, NY 12901

Marshia DeSorcie, CSW

561-0100 ext. 244



“Stronger Community = Better Lives”

Our partner agencies:

Champlain Valley Educational Services

Child Care Coordinating Council

Clinton County Office of the Aging

Clinton Community College

Clinton County Veteran’s Services

NC Cultural Center for the Arts

The Development Corporation

ACCES/VR

Center for Independent Living

Clinton County Health Department

Plattsburgh Public Library

Behavioral Health Services North

Plattsburgh Housing Authority

Cornell Cooperative Extension

Glens Falls National Bank

Workforce Investment Board

Plattsburgh City Schools

Mountain Lake PBS

Clinton County Jail

OneWorkSource

Chamber of Commerce

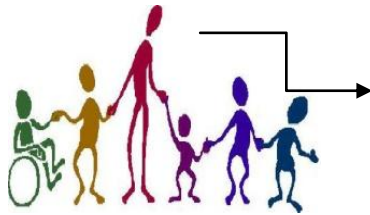
Literacy Volunteers

Clinton County ETA

U-First Credit Union

Our Mission: “To ensure members of the community are connected with resources and opportunities to empower and enrich their lives.”

Getting to Know You



Patty Goodell, Coordinator
Marshia DeSorcie, LCSW

Champlain Valley Educational Services
1585 Military Turnpike Ext.
Plattsburgh, NY 12901
www.cves.org

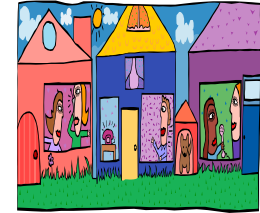
Services at OneWorkSource

- HSE/Literacy Services
- College Preparation
- Training Opportunities
- Financial Literacy
- Health Literacy
- Employment Services
- National Work Readiness Credential
- ACCES-VR Services
- Disability Navigator
- Child Care Council Programs
- Emergency Housing
- Veteran's Counseling and Services

Referrals to Partner Agencies

- Mental Health Services
- Developmental Screening
- Parenting Education/Parent-Child Play Groups
- Health Screenings
- Public Library Services
- Plattsburgh City School Programs
- LVA/ Literacy Tutoring
- Independent Living/Peer Mentors
- Education in the Arts
- Post Secondary Education
- Mountain Lake PBS Programs
- Income Tax Preparation
- Health Insurance
- Transitional Services from Incarceration
- Connecting Youth and Seniors
- Family Literacy Services
- Housing Referrals

Connected!



- Follow-up Appointment
- Accessing Services
- Training
- Job Placement
- Post Secondary Education
- Continued Support